

## Wohnung W10 4.1

### 3.5 Zimmer-Wohnung

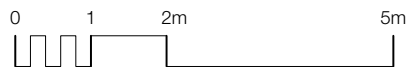
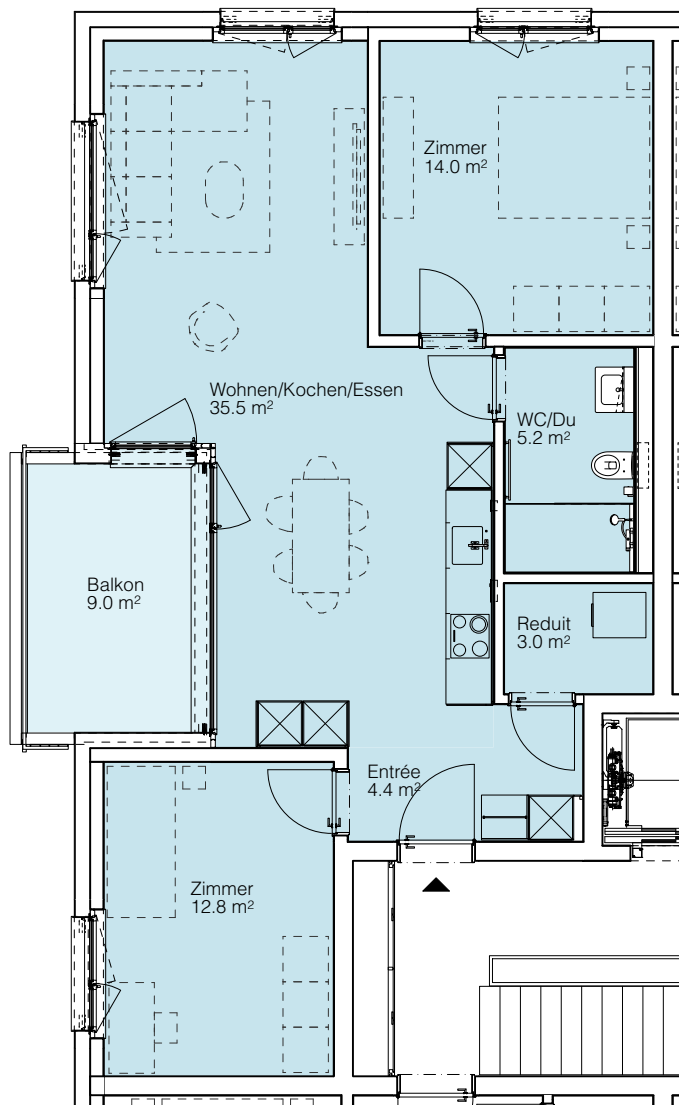
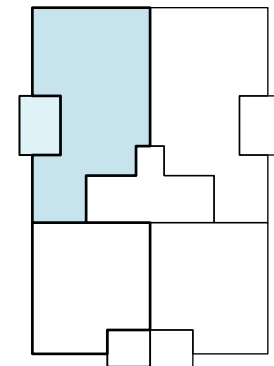
#### 4. Obergeschoss

Nutzfläche 74.9 m<sup>2</sup>

Balkon 9.0 m<sup>2</sup>

Keller UG 11 m<sup>2</sup>

Anzahl Bäder 1



M 1:100

Mehrfamilienhaus  
Glattlerweg 10 | Spreitenbach